

# MiniEtch EU80

The MiniEtch EU 100 is a small, compact marking unit, ideal for etching small to medium sized marks.

With a robust, powder coated metal cabinet, adjustable power settings and the ability of deep-marking, the MiniEtch is the ideal industrial budget etching solution.

- Budget marking unit for lower volumes
- Basic marking settings for black-marking
- Suitable for basic text and numbers
- Suitable for small logos without large black areas

## How the MiniEtch unit works

The MiniEtch EU80 works by passing a controlled low-voltage electric current through a pre-printed stencil.



The current is transferred through the gaps in the stencil using a harmless electrolyte fluid and etches away a thin layer of the surface material leaving a dark contrasting finish.

The mark is usually generated within 3-5 seconds depending on the material and the size or composition of the design.

## Electrolytes and accessories

A wide variety of different accessories, stencil printers and consumables are available to suit your application.

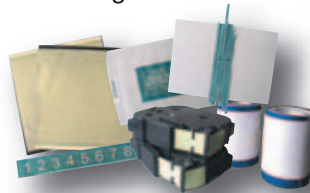
With the right electrolyte, you can etch stainless steel, brass, aluminium, mild steel, high speed steel, chrome... practically any conductive metal.

Choosing the right options to make your etching easy is as simple as contacting a Trend representative.



## Stencils available

Depending on the information you need to mark onto the part, there are a number of different stencils available. A stencil contains the message you wish to transfer onto the part.



Your options include:

1. Permanent stencils
2. Disposable Paper stencil sheets
3. PT hand-held stencil printer
4. Permanent (long-life) stencil strips
5. Variable Band-Numbering stencils

\* A combination of options may offer the best solution to your requirements.



Electrolytes for various metals



Hand-held stencil printers



Milled marking heads



Bench Rollers



## Trend Marking Systems

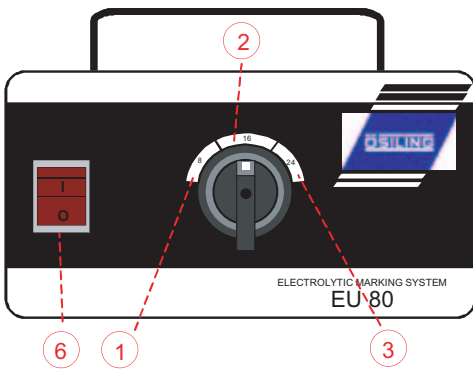
POSTAL: PO Box 1311 Castle Hill NSW 2154  
TEL: 61-2-96299535 FAX: 61-2-96297535  
EMAIL: trend@trendmarking.com.au  
www.trendmarking.com.au

# Technical Specifications

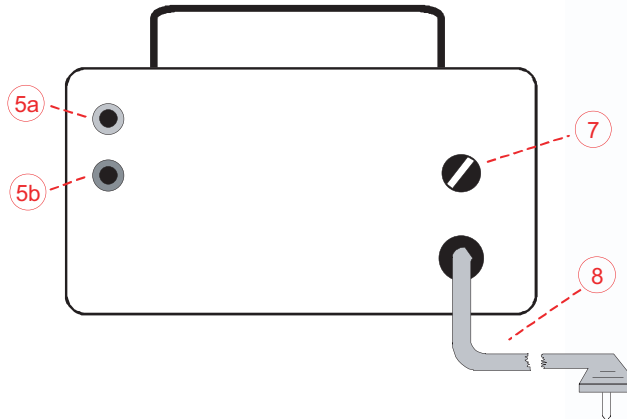


|                        |                    |
|------------------------|--------------------|
| Input voltage          | 230 V, AC          |
| Output voltage         | Max. 24 V (AC)     |
| Power                  | 100 VA             |
| Circuit breaker        | T 2 A              |
| Dimensions (L x W x H) | 155 x 200 x 150 mm |

## Controls



- Pos. 1 Marking Power 8 (AC)
- Pos. 2 Marking Power 16 (AC)
- Pos. 3 Marking Power 24 (AC)



- Pos. 5a Connection - Positive cable
- Pos. 5b Connection - Negative cable
- Pos. 6 ON - OFF Switch
- Pos. 7 Circuit breaker T 2 A
- Pos. 8 Power cord



## Trend Marking Systems

POSTAL: PO Box 1311 Castle Hill NSW 2154  
 TEL: 61-2-96299535 FAX: 61-2-96297535  
 EMAIL: trend@trendmarking.com.au  
 www.trendmarking.com.au

